

Refer to detail of the cab, chassis and chassis frame drawing based on following table.

RELEVANT MODEL

CLASSIFICATION NUMBER	CHASSIS DRAWINGS			
	CAB	CAB BACK	CHASSIS	CHASSIS FRAME
SH-017	C-1	CB-1	CH-1	CF-1

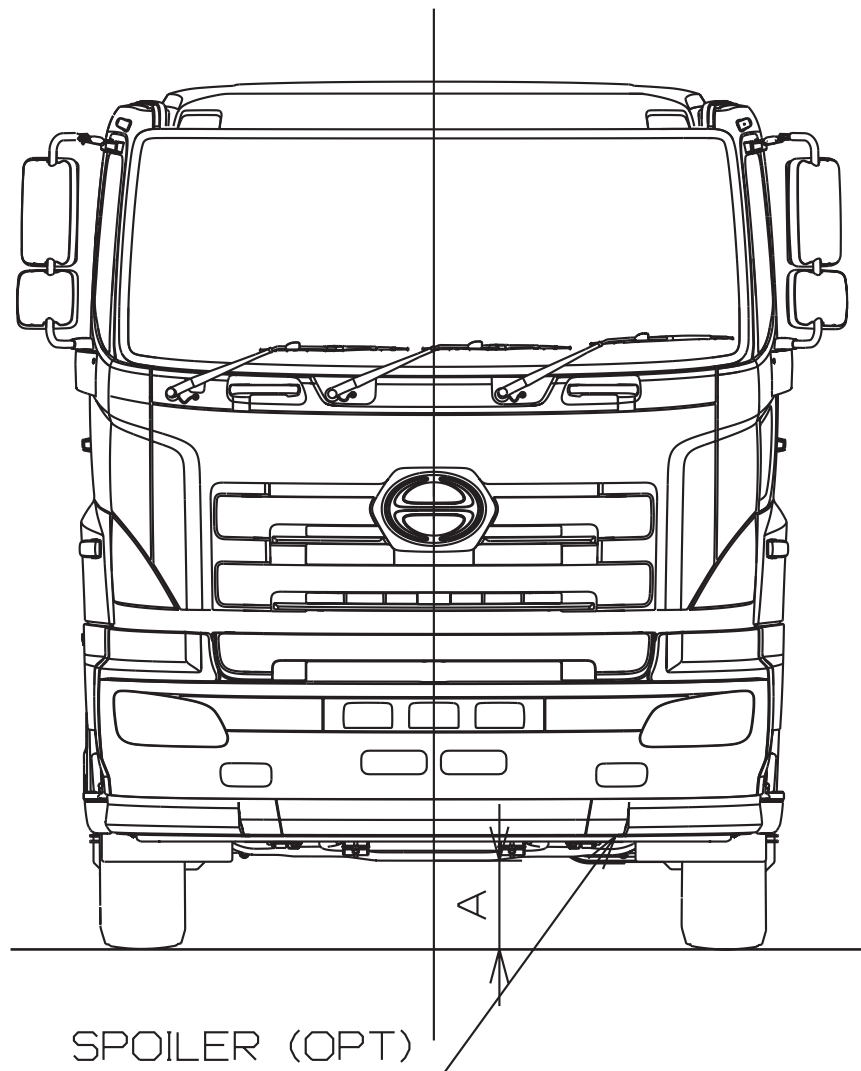
- Refer to chapter 1, 3 chassis specification for classification number.

8.1 CAB DRAWINGS

No. C-1

• Front

Unit : mm

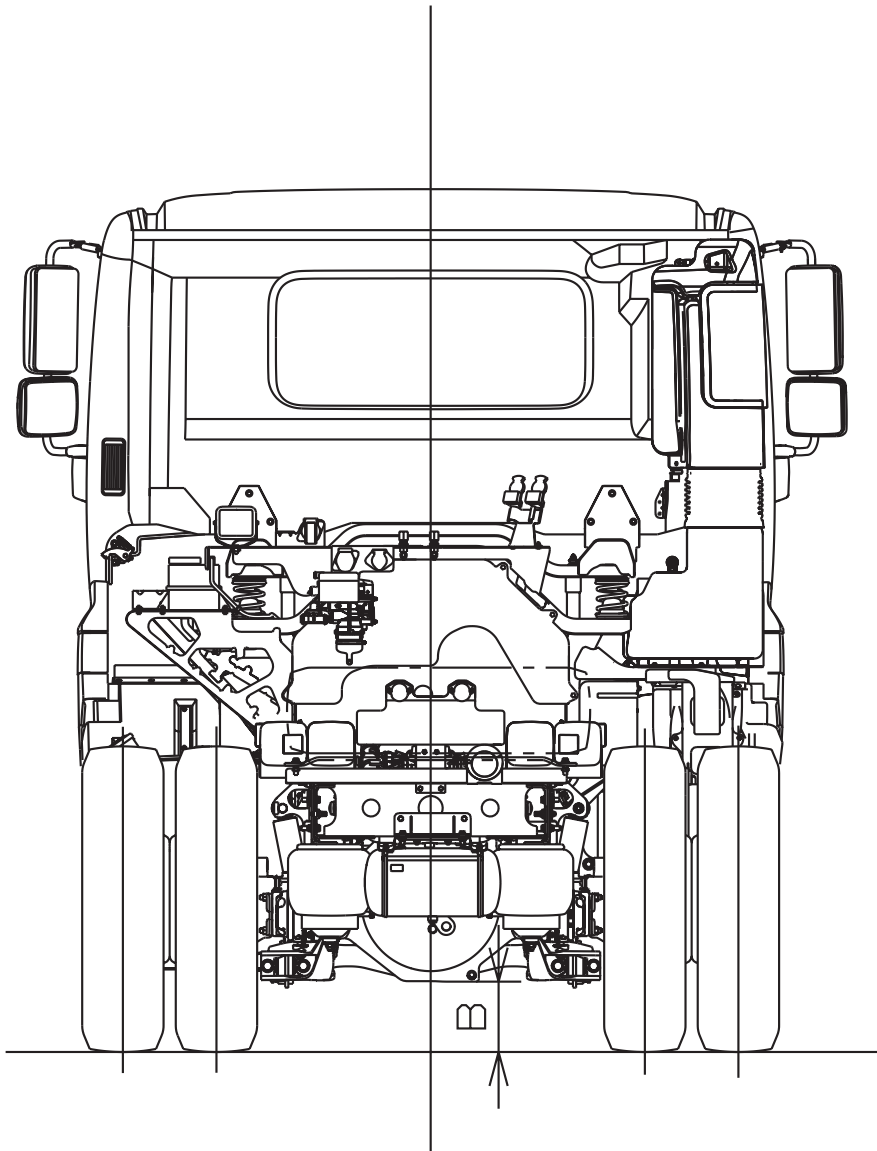


※ Marked "A" to be shown chassis drawing.

No. C-1

• Rear

Unit : mm



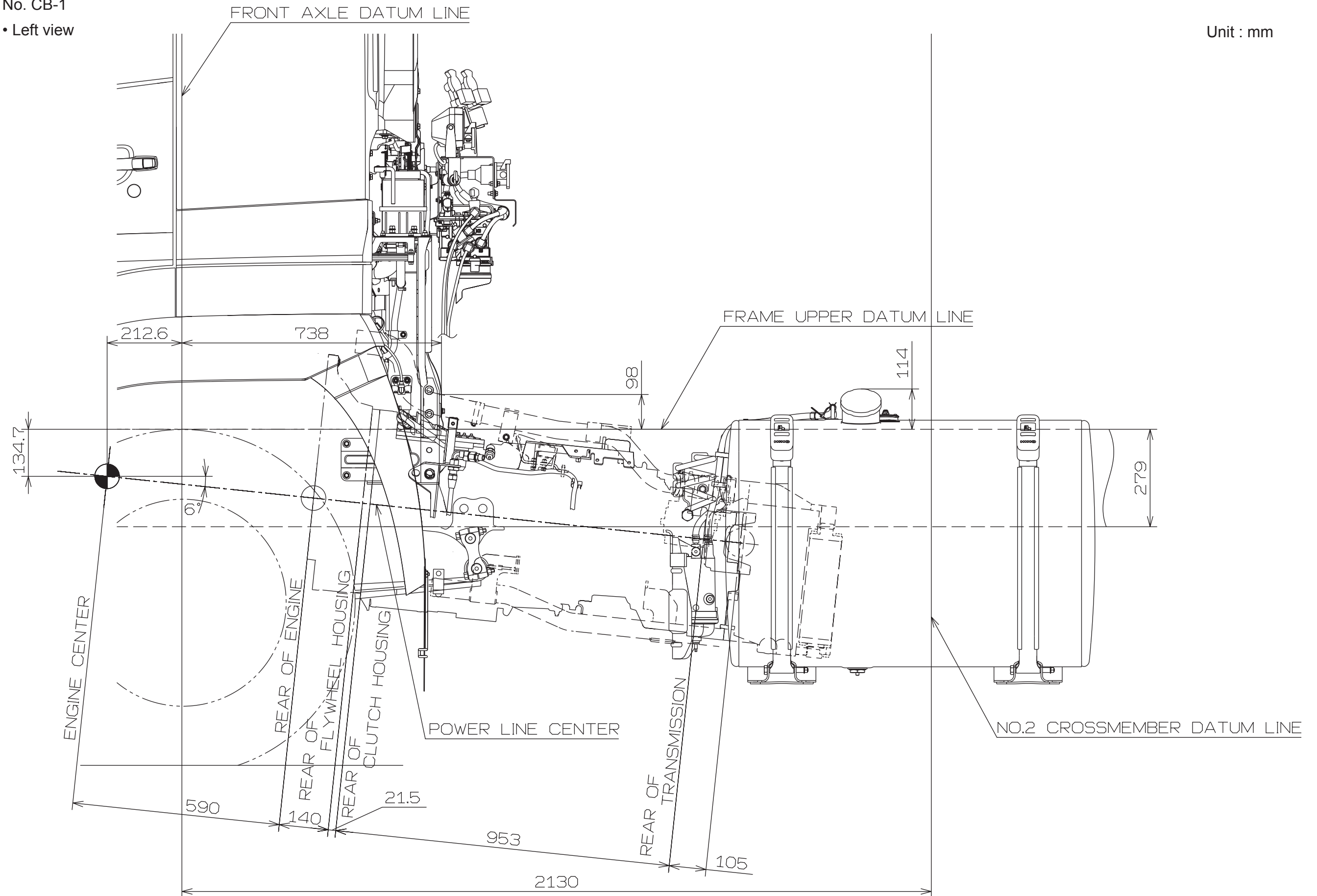
※ Marked "B" to be shown chassis drawing.

8.2 CAB BACK DRAWINGS

No. CB-1

• Left view

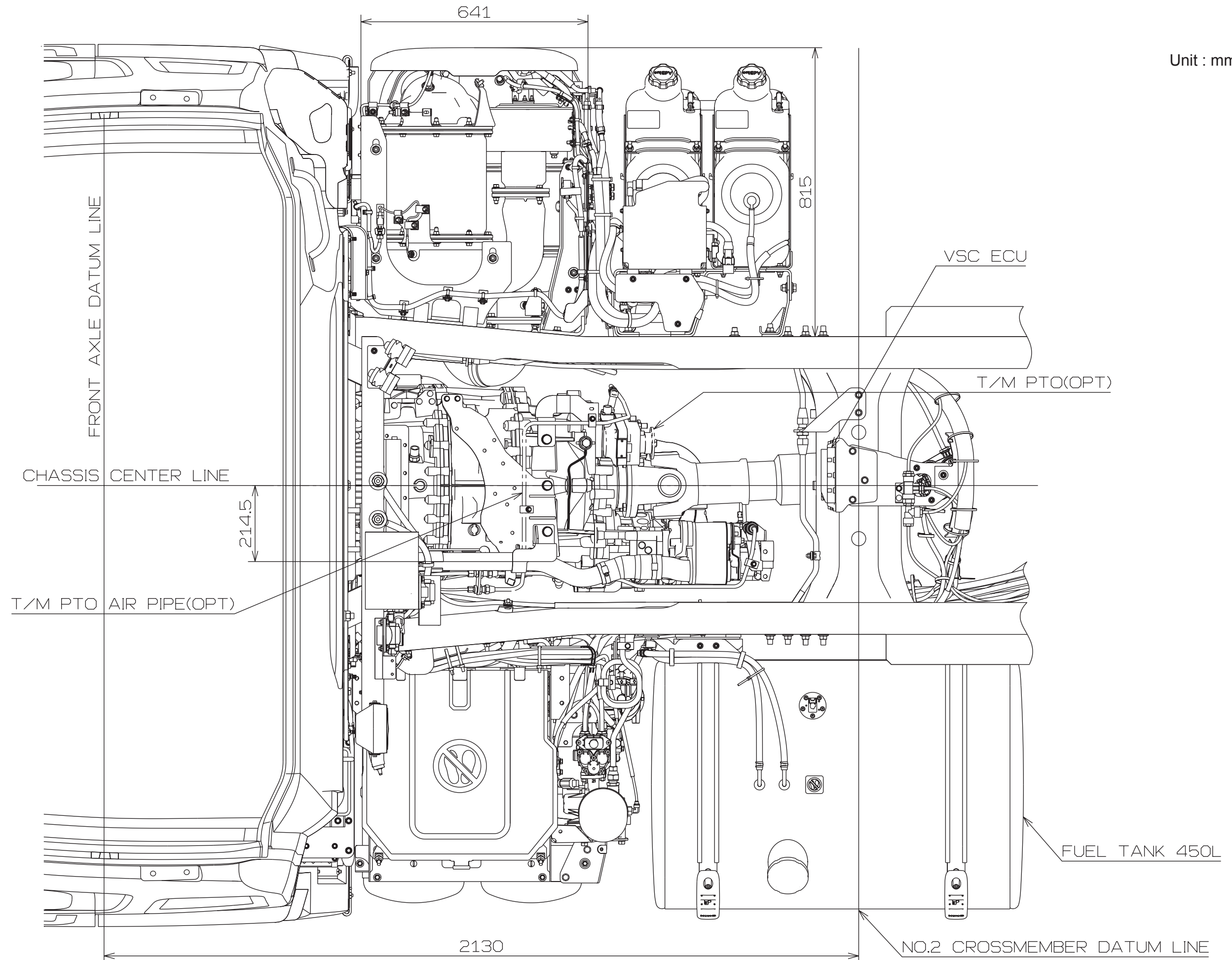
Unit : mm



No. CB-1

• Upper view

Unit : mm



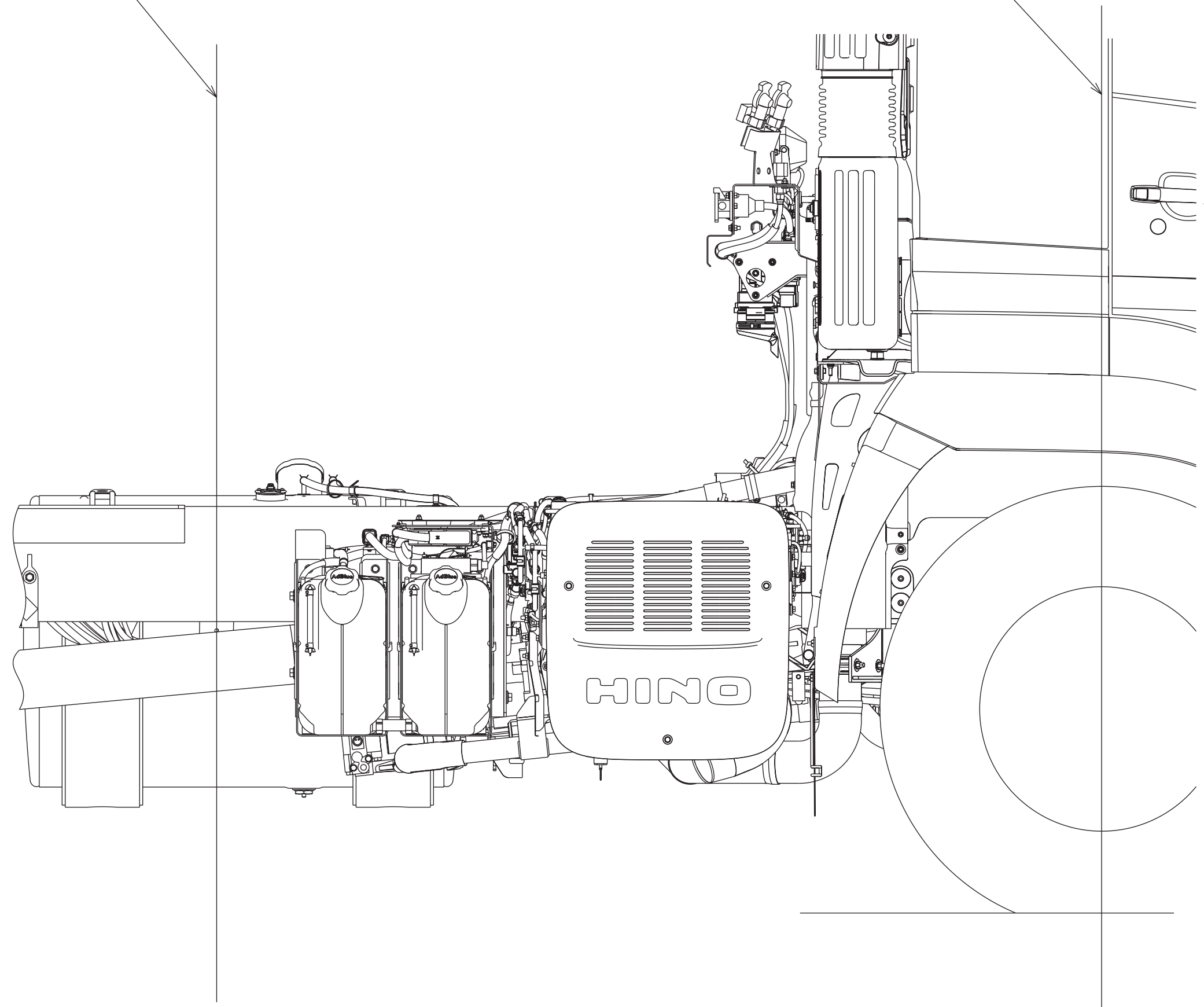
No. CB-1

• Right view

NO.2 CROSSMEMBER DATUM LINE

FRONT AXLE DATUM LINE

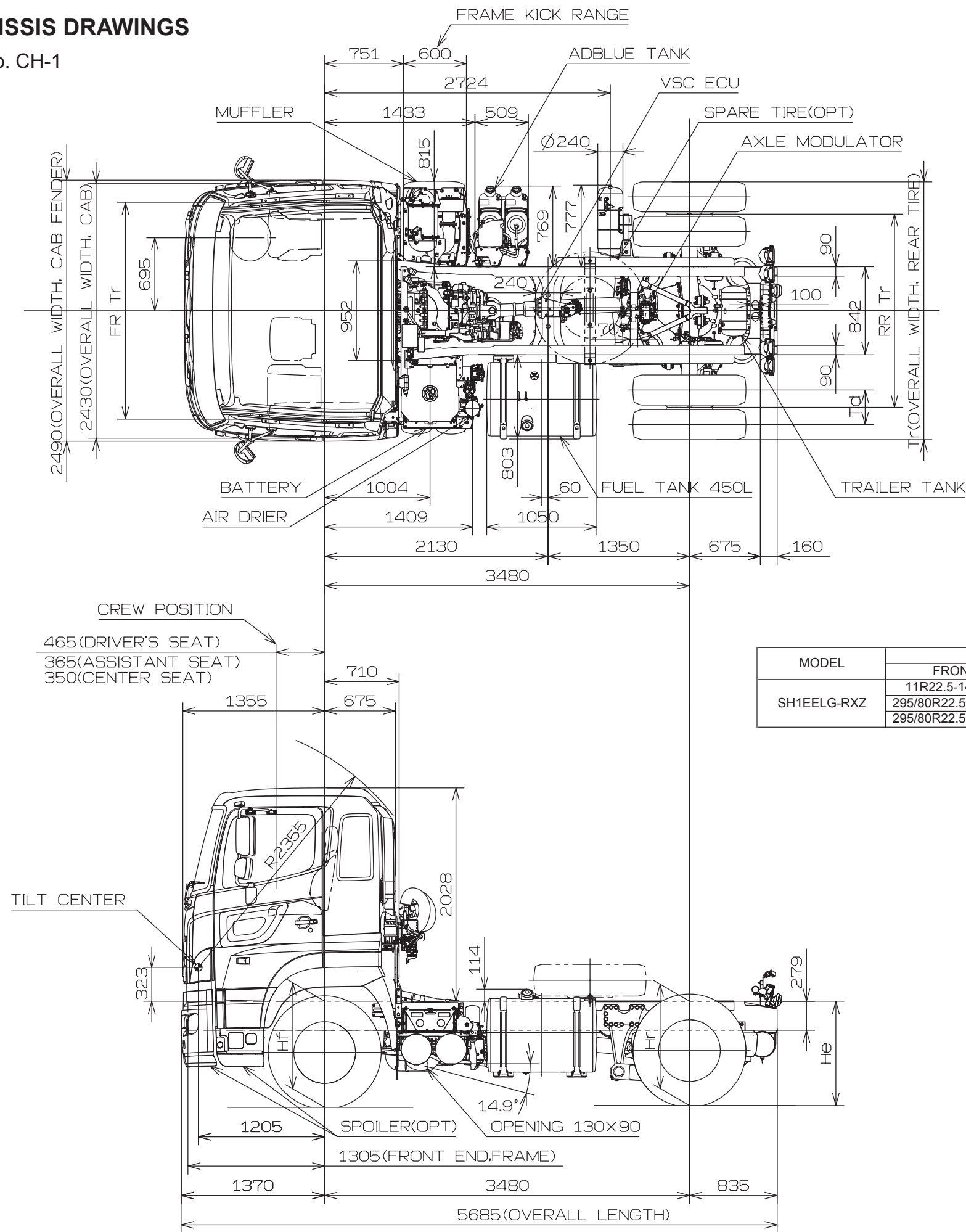
Unit : mm



8.3 CAHSSIS DRAWINGS

No. CH-1

Unit : mm



MODEL	TIRE		DISC		DIMENSIONS								
	FRONT	REAR	FRONT	REAR	Hf	Hr	He	A	B	FR Tr	RR Tr	Td	Tr
SH1EELG-RXZ	11R22.5-148/145	11R22.5-148/145	22.5X8.25-165	22.5X8.25-165	980	990	993	264	196	2055	1840	330	2449
	295/80R22.5-152/148	295/80R22.5-152/148	22.5X8.25-165	22.5X8.25-165	980	987	989	259	191	2055	1840	330	2468
	295/80R22.5-152/148	11R22.5-148/145	22.5X8.25-165	22.5X8.25-165	980	991	994	259	196	2055	1840	330	2449

NOTE : 1.Figures marked " ※ "dimensions are measured in parallel with the surface of the ground.

2.The dimension of tire to be mentioned in above table shows design figure according to JATMA or ETRTO standard.