

860SJ

TELESCOPIC BOOM LIFT



Performance

Platform Height	26.21 m
Working Height	28.21 m
Horizontal Outreach	22.86 m
Swing	360 Degrees Continuous
Platform Capacity	230 kg
Platform Size	0.91 x 2.44 m
Platform Rotator	180 Degrees Hydraulic
Jib Length	1.83 m
Jib Range of Articulation	130 Degrees (+70, -60)
Weight*	17,200 kg
Drive Speed	5.6 km/h
Gradeability	45%
Turning Radius	
Outside	6.86 m
Inside	3.66 m

Standard Specifications

Power Source

Diesel Engine	
Deutz D2011L04	36.5 kW
Fuel Tank Capacity	117.3 L

Hydraulic Reservoir

- Hydraulic Reservoir 151.42 L
- Auxiliary Power 12V-DC

Tyres

- Standard Foam-Filled

Standard Features

- 4 Wheel Hydrostatic Drive
- 180 Degree Hydraulic Platform Rotator
- Platform Console Machine Status Light Panel*
- AC Generator including AC Outlets to Platform
- 4 Degree Tilt Alarm/Indicator Light
- Swing Out Engine Tray
- 12V-DC Auxiliary Power
- Hourmeter
- Proportional Controls
- Control ADE® System
- Lifting/Tie Down Lugs
- Horn
- Oscillating Axle
- Operator Tool Tray
- Inward Self-Closing Swing Gate
- Flashing Amber Beacon
- Motion Alarm
- Glow Plugs (Diesel Engines)

*Provides indicator lights at platform control console for system distress, low fuel and foot switch status.



Accessories & Options

- 0.91 x 1.83 m Platform
- 1/2 in. Air Line to Platform
- White Noise (Squawker) Alarm
- Fire Extinguisher
- Light Package
- Platform Worklights
- Special Hydraulic Oils (Consult Factory)
- Spark Arresting Muffler
- Accessory Packages
 - SkyGlazier® Package
 - SkyGuard®
 - PipeRack
 - ClearSky®

Note: Some options may increase lead time, and some option combinations may not be available.

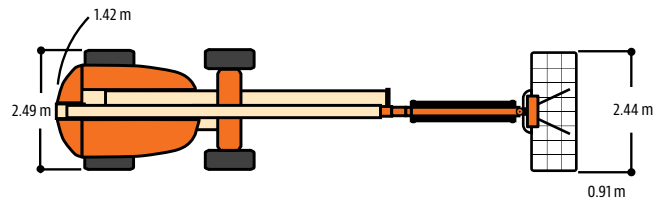
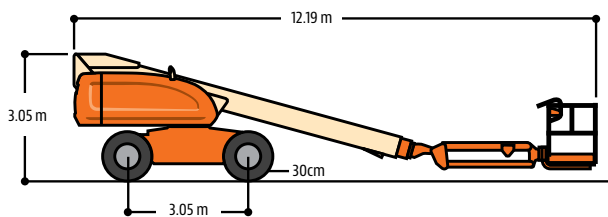
860SJ

TELESCOPIC BOOM LIFT

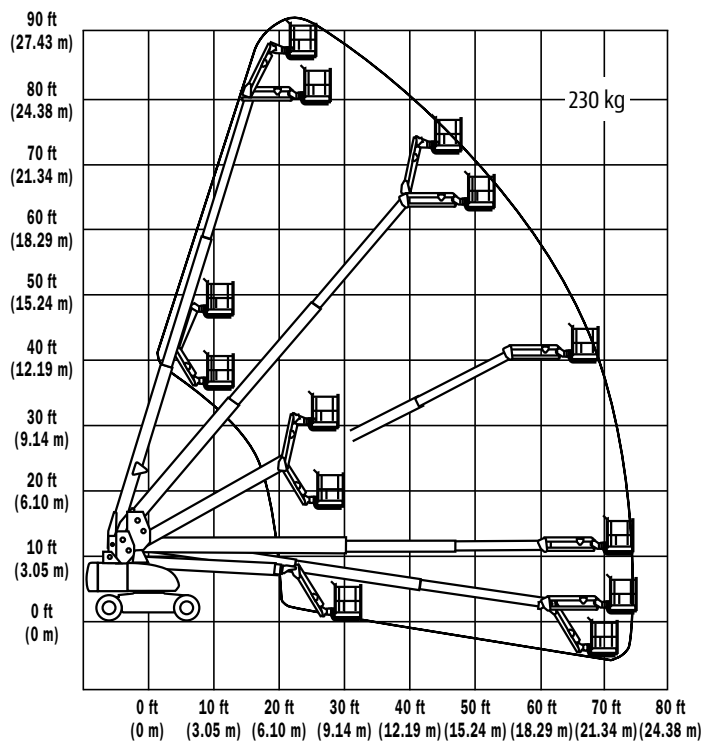


Dimensions

All dimensions are approximate.



Reach Diagrams



The JLG "1 & 5" Warranty

JLG Industries, Inc. backs its products with its exclusive "1 & 5" Warranty. We provide coverage on all products for one (1) full year and cover all specified major structural components for five (5) years. Due to continuous product improvements, we reserve the right to make specification and/or equipment changes without prior notification. This machine meets or exceeds AS/NZS 1418.10 2011 as originally manufactured for intended applications.

JLG Industries (Australia)

358 Park Road
 Regents Park, NSW 2143
 Telephone 02 8718 6300
 Fax 02 8718 6377
www.jlg.com.au

An Oshkosh Corporation Company